

**MERCER**  
COMMERCIAL

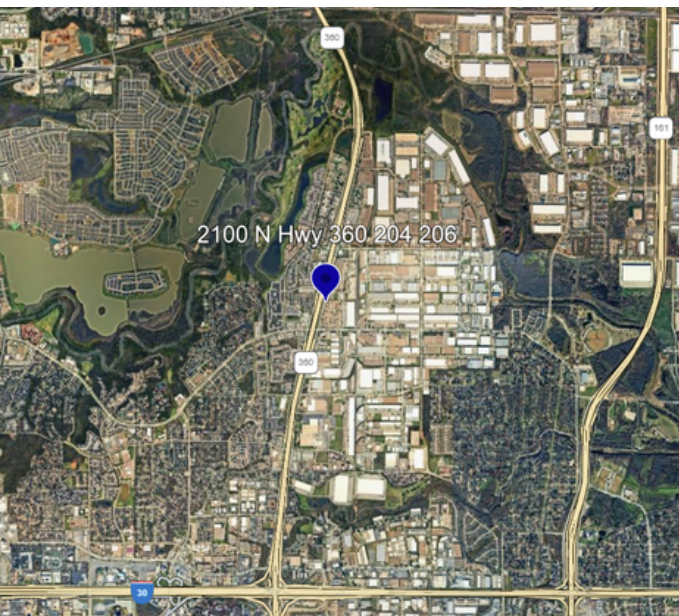


**COMPANY**  
REAL ESTATE

**FOR LEASE**

**AVAILABLE: 2,800 SF**

2100 N HWY 360 #703-704, GRAND PRAIRIE, TX 75050



## PROPERTY FEATURES

- Available SF: 2,800
- 3 Offices
- 2 Restrooms
- 2 Grade Level Doors
- 100% HVAC

**CORBY HODGKISS, SIOR**

Executive Vice President

(469) 360-3918

chodgkiss@mercerc-company.com

**NICK FULTON**

Market Director

(469) 616-8783

nfulton@mercerc-company.com

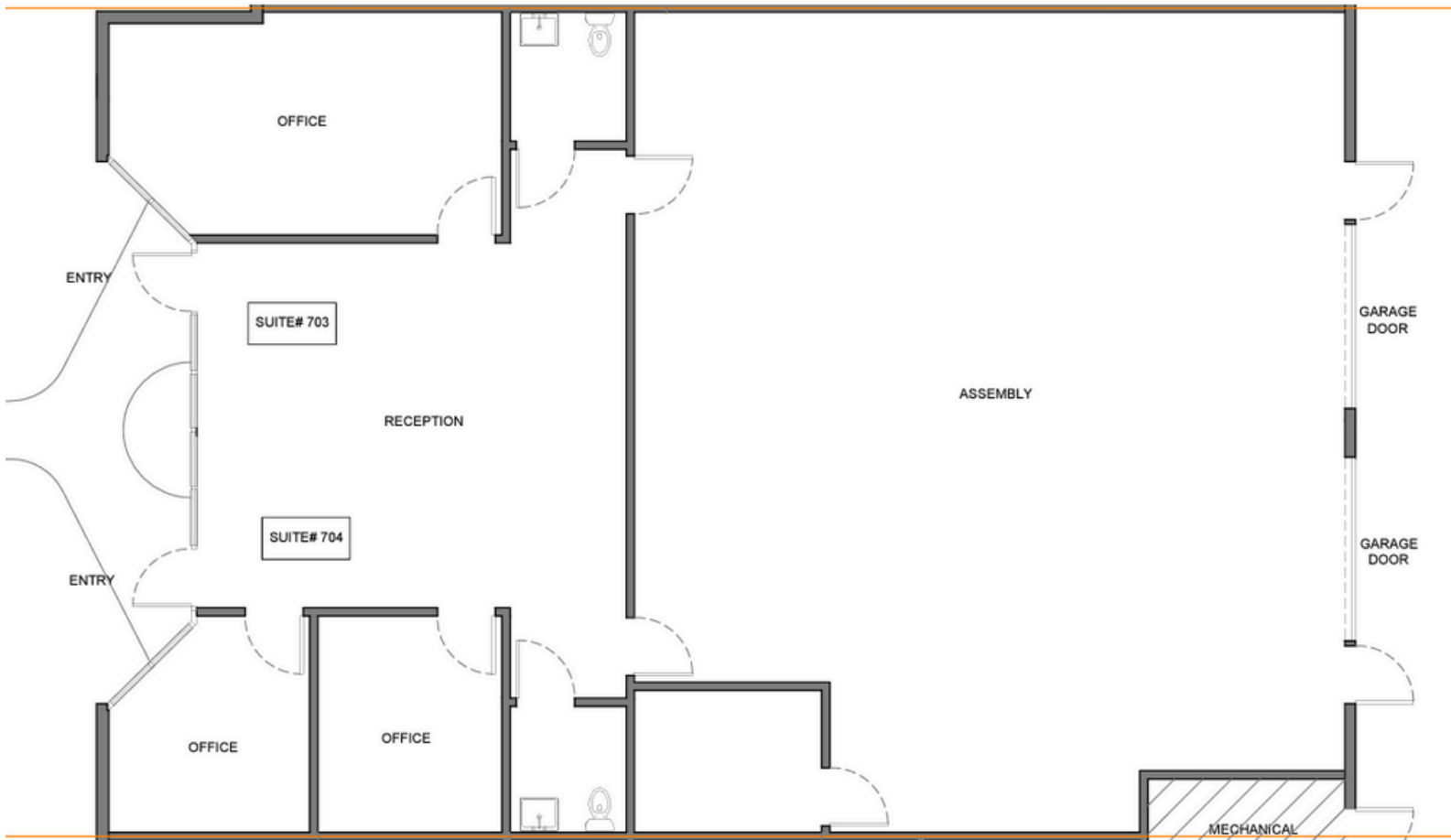
Mercer Company  
2461 N Stemmons Fwy, Dallas, TX 75207

mercerc-company.com

# AVAILABLE: 2,800 SF

2100 N HWY 360 #703-704, GRAND PRAIRIE, TX 75050

## FLOORPLAN



**CORBY HODGKISS, SIOR**

Executive Vice President  
(469) 360-3918



**NICK FULTON**

Market Director  
(469) 616-8783

The information contained herein has been given to us by the owner of the property or other sources we deem reliable. We have no reason to doubt its accuracy, but we do not guarantee it. All information should be verified before purchase or lease.