

**FOR LEASE**

**AVAILABLE: 1,400 SQUARE FEET**

**2100 N HWY 360 #1501, GRAND PRAIRIE, TX 75050**

## PROPERTY FEATURES

- ✓ Available SF: 1,400
- ✓ Office SF: 665
- ✓ 14' Clear Height
- ✓ 1 Grade Level Door
- ✓ Reception Area

**CORBY HODGKISS, SIOR**

Executive Vice President

469-360-3918

[chodgkiss@mercerc-company.com](mailto:chodgkiss@mercerc-company.com)

**NICK FULTON**

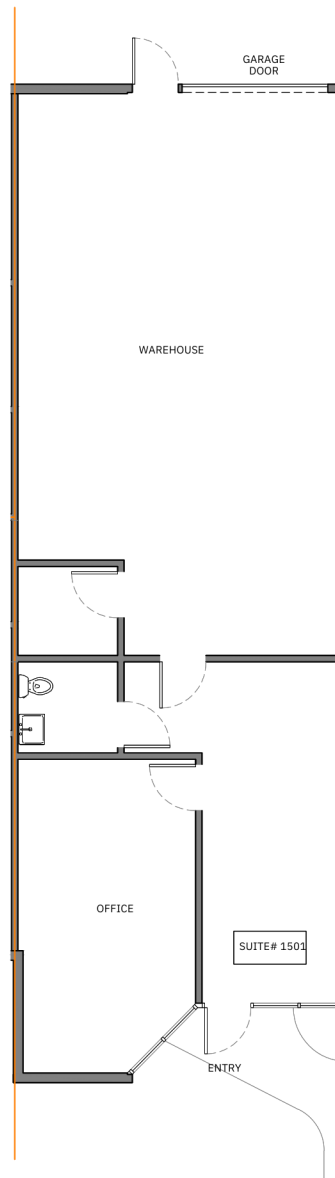
Market Director

469-616-8783

[nfulton@mercerc-company.com](mailto:nfulton@mercerc-company.com)

# AVAILABLE: 1,400 SQUARE FEET

2100 N HWY 360 #1501, GRAND PRAIRIE, TX 75050



**CORBY HODGKISS, SIOR**

Executive Vice President  
469-360-3918



**NICK FULTON**

Market Director  
469-616-8783

The information contained herein has been given to us by the owner of the property or other sources we deem reliable. We have no reason to doubt its accuracy, but we do not guarantee it. All information should be verified before purchase or lease.