

FOR LEASE

AVAILABLE: 1,055 SQUARE FEET

2100 N HWY 360 #1404, GRAND PRAIRIE, TX 75050

PROPERTY FEATURES

- ✓ Available SF: 1,055
- ✓ Office SF: 815
- ✓ 14' Clear Height
- ✓ 1 Grade Level Door
- ✓ Reception Area
- ✓ 2 Private Offices

CORBY HODGKISS, SIOR

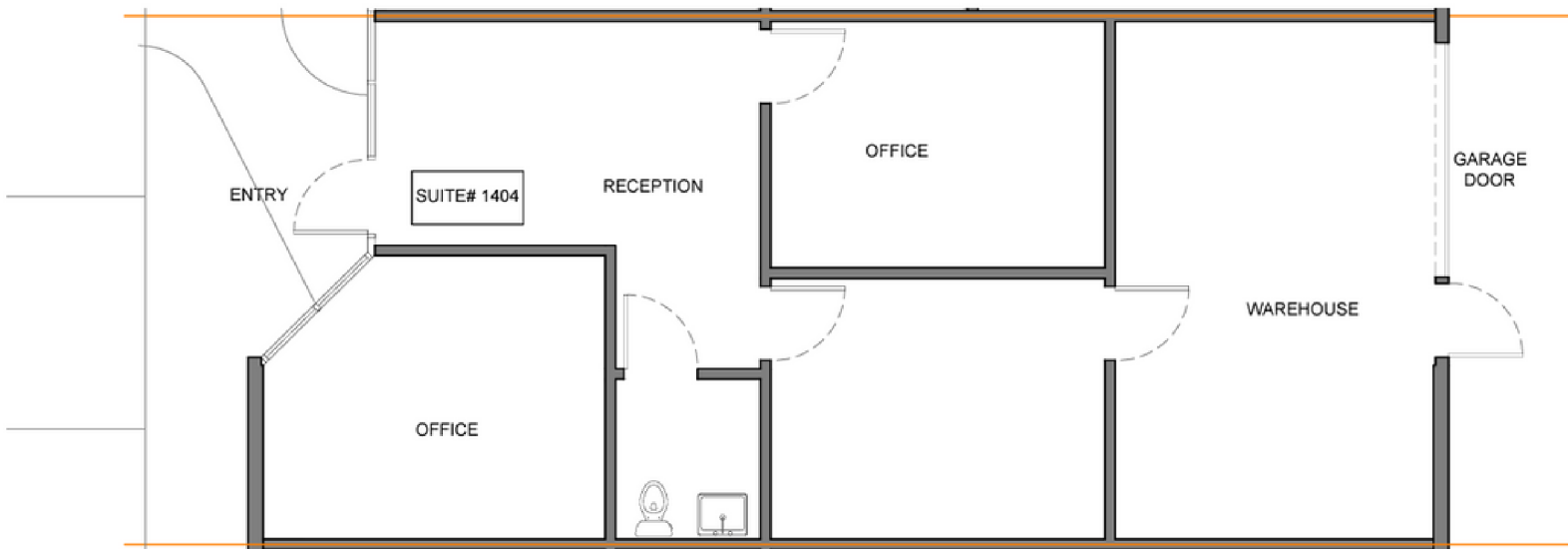
Executive Vice President
469-360-3918
chodgkiss@mercerc-company.com

NICK FULTON

Market Director
469-616-8783
nfulton@mercerc-company.com

AVAILABLE: 1,055 SQUARE FEET

2100 N HWY 360 #1404, GRAND PRAIRIE, TX 75050



CORBY HODGKISS, SIOR

Executive Vice President
469-360-3918



NICK FULTON

Market Director
469-616-8783

The information contained herein has been given to us by the owner of the property or other sources we deem reliable. We have no reason to doubt its accuracy, but we do not guarantee it. All information should be verified before purchase or lease.